



# Welcome to NSA Naples

Ciao a tutti! The School Liaison Program (SLP) is here to support you and your children in their schooling needs that coincide from grades Pre-K to 12. Attached are the basic introductory information for school start and registration.

---

Questions?

[NaplesSLP@us.navy.mil](mailto:NaplesSLP@us.navy.mil).

COMM +39 081-811-6549

SL Office, Youth Programs (Bldg. 2072), Support Site

Make sure to stay up-to-date at

[www.facebook.com/napleschildandyouthprograms](https://www.facebook.com/napleschildandyouthprograms)



# Department of Defense Education Activity (DoDEA)



The DoDEA Naples Elementary School, home of the Dolphins, is located on the Support Site base here in Naples with students from Universal Prekindergarten-grade 6. The school vision, "empowering each student to be an independent, creative problem-solver," permeates the classrooms, school climate, and can be seen in the myriad of extracurricular activities to include STEM Night, Field Day, Movie Nights, lunch time clubs, and more. Please begin the online registration portion before arriving.

<http://www.dodea.edu/NaplesES/>



The DoDEA Naples Middle High School, home of the Wildcats, grades 7-12 provides students with curriculum activities to include AVID, Honors and AP courses, sports (football, cheerleading, cross-country, basketball, soccer, baseball/softball, volleyball, track, wrestling, tennis, golf, and more), and clubs/organizations (Student Council, JROTC, Drama, Homework, Model U.S. Senate, National Honor Society, Student2Student and more).

<http://www.dodea.edu/NaplesMHS/>

If you will be living on the economy, please note that the school bus route is available. Please check with the **School Transportation Office**. They can provide you with basic guidelines as well as specific bus stops. You can reach them at [Naples.SBO@eu.dodea.edu](mailto:Naples.SBO@eu.dodea.edu).

The **Military Interstate Children's Compact Commission (MIC3)** has specific articles that deal with enrollment, immunizations, placement, graduation and many other areas of importance for our active-duty families. You can find more information at [www.mic3.net](http://www.mic3.net).

The **Military and Family Life Counselors (MFLCs)** work with our military students at the DoDEA schools and CYP programs. A parent release form must be signed before a counselor can work with a student one-on-one. Contact information can be found at FFSC, DoDEA schools, CYP locations and installation social media sites. School adjustment, deployment, reunion, and behavior are some of the areas addressed by the MFLCs. Civilian students may participate in group sessions.



Additionally, other school options are available, to include International Schools, Italian Public Schools and Homeschooling. Please see the “Alternative Childcare and Educational Options”, “Italian Public Schools” and “Naples Homeschooling Roadmap” documents on the School Liaison webpage <https://www.navymwrnaples.com/child-youth/school-liaison>. The SL webpage is FULL of supportive resources to check out!

## School Choice

### Homeschool

- Registration not required
- Registering with DoDEA allows for up to 3 classes and auxiliary services

### International School

- No tuition reimbursement
- Contracts and pricing per school, grade level and family

### Italian Public Schools

- Vary amongst neighborhoods and cities
- No comparison tools
- Catholic school curriculum
- High schools specialize in a field of study
- Different school terms and calendars



# The In's and Out's of CYP Resources for Care

## Child Development Center (CDC)

### "Wrap Around Care"

- Universal Prekindergarten.
- Available at Capo and Support Site locations before and after school hours.
- Visit [www.militarychildcare.com](http://www.militarychildcare.com) to request care.
- Complete registration packet.
- Questions? Contact the Child Development Center at [NaplesCYP1@us.navy.mil](mailto:NaplesCYP1@us.navy.mil).

## School Age Care (SAC)

### Before and After School Care

- Kindergarten to age 12 (and sixth grade).
- Available at Support Site location before and after school hours.
- Based on space available.
- Visit [www.militarychildcare.com](http://www.militarychildcare.com) to request care.
- Complete registration packet.
- Questions? Contact the Youth Center at [NaplesCYP1@us.navy.mil](mailto:NaplesCYP1@us.navy.mil).

## Teen Center

- Age 12 (and seventh grade) to age 18 (and twelfth grade).
- Available at Support Site location after school hours.
- Complete registration packet.
- Questions? Contact the Teen Center at [NaplesCYP1@us.navy.mil/](mailto:NaplesCYP1@us.navy.mil/)

Beyond this, youth in grades 3-6 can be provided a "Welcome Kit" from our School Age Care (SAC) Anchored4Life club. Youth in grades 7-12 can be paired up with their own youth sponsor through the NMHS Student2Student program and/or the Naples CYP Teen Center Anchored4Life club. Teens may also receive an Anchored4Life kit! Is your youth interested? Please let the School Liaison know!



# Things to Note:

## Registrations

If you have any questions regarding your DoDEA registration reach out to NES Registrar at [NaplesES.Registrar@dodea.edu](mailto:NaplesES.Registrar@dodea.edu) and NMHS Registrar at [michela.pellecchia@dodea.edu](mailto:michela.pellecchia@dodea.edu) . Please let them know when you have completed the online registration. They will advise on the next steps.

## Meal Accounts

Sign up at [www.linqconnect.com](http://www.linqconnect.com) to pre-pay for your student's DoDEA meal ahead of time. Paying at the NEX Customer Service desk is also an option. Meal information, payment information, recurring payments and notifications are available. Choose "DoDEA--Navy Exchange (Alexandria, Virginia)" when creating accounts. Lunch line PIN numbers are generated via email by LINQ Connect after school enrollment.

## Meal Applications

Applying for DoDEA free and reduced meals just got easier. Visit [www.linqconnect.com](http://www.linqconnect.com) to apply! Choose "DoDEA—Navy Exchange (Alexandria, Virginia)". New school year submissions begin each July!

## School Hours

Every Wednesday is early release at 1335 (NES) and 1340 (NMHS). NES hours are from 0805-1445. NMHS hours are from 0800-1440. The NMHS schedule runs on an A day (green) or B day (black) schedule. NMHS students will attend periods 1-4 on A days and periods 5-8 on B days.



# Things to Note (continued):

## Overseas Screenings

To help facilitate your upcoming move, please complete an Overseas Screening and enroll in the Exceptional Family Member Program (EFMP)\*. Your sponsor should ensure all dependent children medically and educationally screen prior to travel. The educational screening process will provide important information regarding the services available in Naples for your children. If the sponsor is active duty, they should send the completed DD2792-1 and copies of the children's IEPs to the EFMP contact. If the sponsor is a civilian, they should send the completed DD2792-1 and copies of the children's IEPs to the human resources point of contact. Once documents are uploaded to the Educational Screening and Assignment Concern Management System (ESACS), both DoDEA and EFMP will be able to make recommendations. \*Civilian families will not enroll in the EFM Program (but will use the forms as a means of proper communication).

## Child Care

If child care isn't available within 30 days of your Date Care Needed (DCN) at your new Permanent Duty Station (PDS), you may be eligible for reimbursement of travel costs for a designated person who will care for your children. Reimbursement is provided through a congressionally authorized pilot program through 30 September 2027. Please see "Commercial Travel Reimbursement for a Designated Person to Provide Child Care During PCS Moves" info at [www.militarychildcare.com](http://www.militarychildcare.com).



# Things to Note (continued):

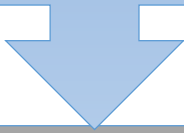
## Conditional Enrollment

Select courses and build a class schedule 90-days prior to arrival!

Be requesting enrollment into grades 9-12.

Meet eligibility requirements for "Space Required" enrollment.

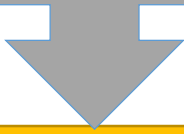
Provide current report card and transcript.



## Transportation

DoDEA School Transportation Office is located at NES. Late/activity bus is available for NMHS sports and clubs. Signing up after school registration is required. NMHS activities can be found at <https://naplesmhs.dodea.edu/school-activities>.

\*\*\*BUS TO/FROM GAETA AREA WILL NO LONGER BE PROVIDED AFTER SY24-25.\*\*\*



## Sports Physicals

Sports physicals are accepted by NMHS from a variety of physicians utilizing a variety of forms. Physicals must have been completed within the past 12 months.

Supplemental medical information form is also required. Italian sports physical are available for off-base sports. Provide current documents to the on-base hospital for an Italian overlay.



## Visa Delays

Visa Delays to Italy for family members are creating lack of interim schooling when the family finds themselves in a schooling gap. Please ensure your student is enrolled in an accredited curriculum program.



Check out the following virtual tours!

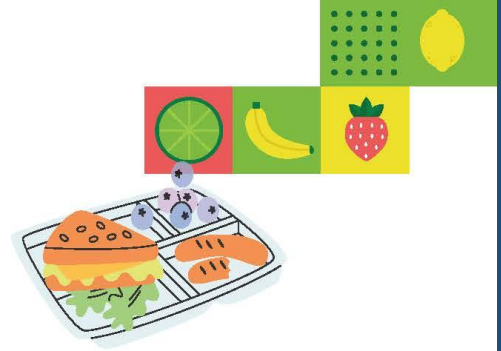
[Installation Virtual Tours](#)

[NMHS school site tour](#)





# LET'S DO LUNCH



## Five steps to register for **school lunches**

- 1. Register each new student with DoDEA**
  - Obtain a 10-digit DoDEA Student ID number from the school registrar. You will need each student's ID number for Step 3.
- 2. Register your family on LINQ Connect (optional)**
  - Make online payments for each student's meal account
  - Set up automatic recurring payments
  - Remotely monitor student accounts and set parental restrictions.
  - Submit an online application for free or reduced meals
- 3. Deposit money into your student's account (two options)**
  - Make deposits at the NEX Customer Service counter
  - Add money to your student's account online. There is a \$2.60 bank convenience fee for each transaction. To save on processing fees, make one payment and transfer funds from one student account to another.
- 4. Submit your School Year 25-26 Free- and Reduced-Meal application (registration begins July 1)**
  - Apply at <https://linqconnect.com> (DoDEA—Navy Exchange, Alexandria, Va.)
  - See the Meal Fee Application Tip Sheet for information to include and exclude (download at [www.navy.mwrnaples.com/child-youth/school-liaison](http://www.navy.mwrnaples.com/child-youth/school-liaison))
  - OCONUS installations follow the USDA Alaska Income Eligibility Guidelines
  - A new application is required for each school year and each move
- 5. Watch for NEX monthly school menus in the weekly newsletter**
  - Wildcat News for middle/high school and La Delfina for elementary school

### Meal Prices

Universal Pre-Kindergarten, Kindergarten and grades 1-5	\$3.50 full price
Grades 6-12	\$3.75 full price
Universal Pre-Kindergarten, Kindergarten and grades 1-12	\$0.40 reduced price

Purchase of daily lunch is required for family-style dining in the Universal Pre-Kindergarten program.  
Second lunch purchase is available at full price of \$7.00 (unsubsidized by USDA) for all grades and income categories.

For more information, email the NSA Naples School Liaison at [NaplesSLP@us.navy.mil](mailto:NaplesSLP@us.navy.mil) or call 081-811-6549 / DSN 629-6549.

